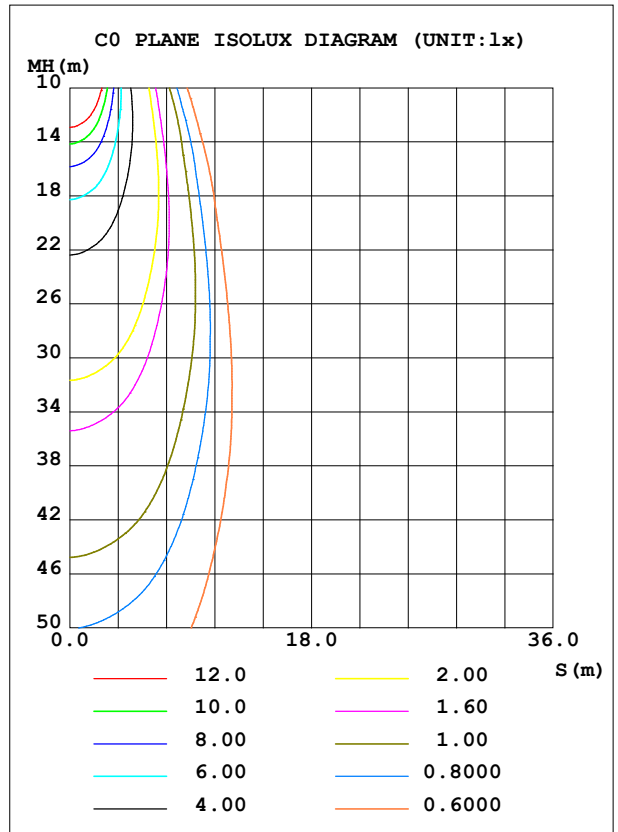
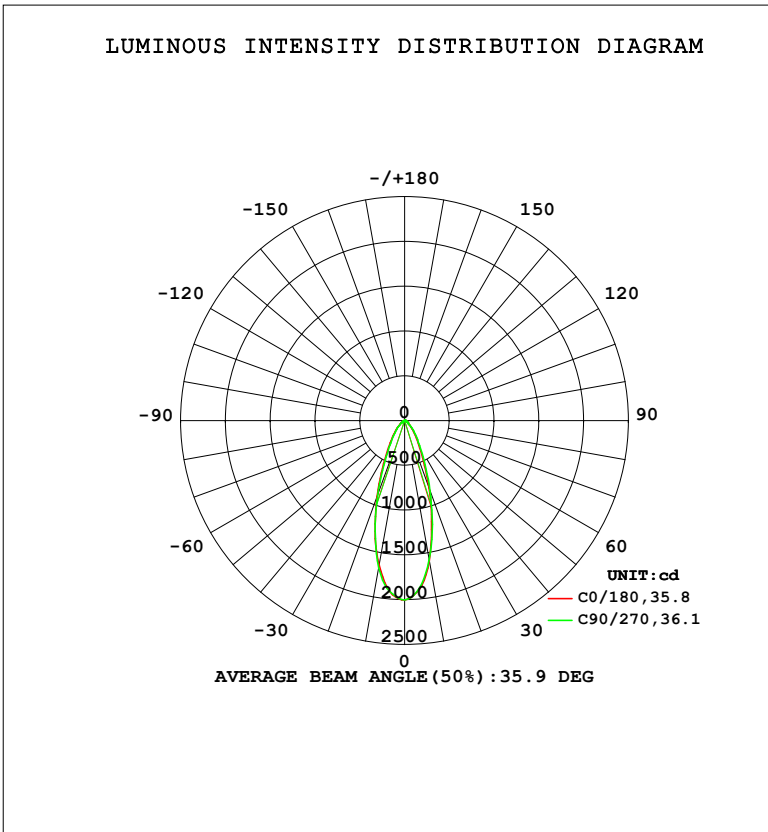


LUMINAIRE PHOTOMETRIC TEST REPORT

Test:U:120.20V I:0.0981A P:11.611W PF:0.9844 Freq:59.98Hz		
UTHDi:0.00% ITHDi:0.00% KDisp:0 Lamp Flux:1074.73x1 lm		
NAME: LED-2-S11W-5CCT-WH-EY	TYPE:	WEIGHT:
SPEC.: 5000K 90	DIM.:	SERIAL No.:
MFR.: LTS	SUR.:	Shielding Angle:

DATA OF LAMP		PHOTOMETRIC DATA			
MODEL		Imax (cd)	2001	S/MH (C0/180)	0.60
NOMINAL POWER (W)	11	LOR (%)	100.0	S/MH (C90/270)	0.60
RATED VOLTAGE (V)	120	TOTAL FLUX (lm)	1074.7	η UP, DN (C0-180)	0.0,49.2
NOMINAL FLUX (lm)	1074.73	CIE CLASS	DIRECT	η UP, DN (C180-360)	0.0,50.8
LAMPS INSIDE	1	η up (%)	0.0	CIBSE SHR NOM	0.50
TEST VOLTAGE (V)	120	η down (%)	100.0	CIBSE SHR MAX	0.60



C Range: 0 - 360DEG
 C Interval: 22.5DEG
 Test Speed: HIGH
 Temperature: 24.3 °C
 Operators:
 Test Date: 2024-03-16

γ Range: 0 - 90DEG
 γ Interval: 1.0DEG
 Test System: EVERFINE GO-SPEX500_V1 SYSTEM V2.00.460
 Humidity: 65.0%
 Test Distance: 3.080m [K=1.0000]
 Remarks:

ZONAL FLUX DIAGRAM

ZONAL FLUX DIAGRAM:

γ	C0	C45	C90	C135	C180	C225	C270	C315	γ	Φ zone	Φ total	%lum,lamp
10	1591	1583	1582	1620	1644	1639	1669	1639	0- 10	172.3	172.3	16,16
20	794.8	810.3	833.2	854.9	902.6	887.7	883.6	898.1	10- 20	339.3	511.6	47.6,47.6
30	325.0	334.6	353.5	361.3	381.2	364.1	350.5	370.9	20- 30	257.0	768.6	71.5,71.5
40	152.0	159.2	169.0	168.4	172.0	164.8	157.2	162.5	30- 40	151.3	919.9	85.6,85.6
50	60.91	60.89	61.16	63.30	69.32	68.26	65.11	66.72	40- 50	85.63	1006	93.6,93.6
60	27.76	29.19	30.37	31.36	30.75	30.28	28.88	27.75	50- 60	40.51	1046	97.3,97.3
70	9.658	10.31	10.91	11.02	9.481	11.17	10.74	10.20	60- 70	19.22	1065	99.1,99.1
80	3.620	4.285	5.480	4.361	3.841	4.512	5.547	4.776	70- 80	7.796	1073	99.8,99.8
90	0.0845	0.0798	0.0895	0.0811	0.0690	0.0606	0.0747	0.0615	80- 90	1.640	1075	100,100
100									90-100			
110									100-110			
120									110-120			
130									120-130			
140									130-140			
150									140-150			
160									150-160			
170									160-170			
180									170-180			
DEG	LUMINOUS INTENSITY:cd									UNIT:lm		

Conical surface Flux(90deg): 970.77 lm

%lum = 90.3%

%lamp = 90.3%

Conical surface Flux(130deg): 1058 lm

%lum = 98.4%

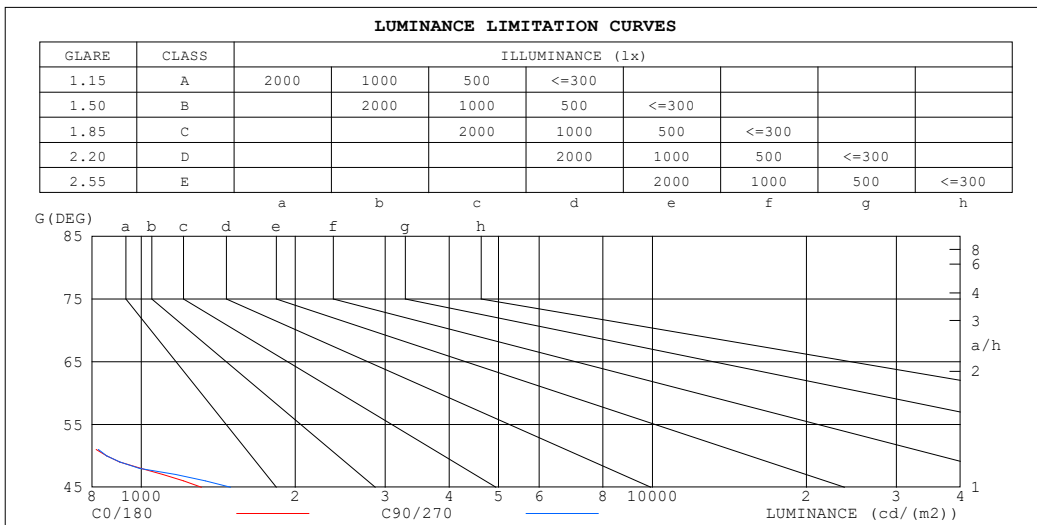
%lamp = 98.4%

C Range: 0 - 360DEG
 C Interval: 22.5DEG
 Test Speed: HIGH
 Temperature:24.3°C
 Operators:
 Test Date:2024-03-16

γ Range: 0 - 90DEG
 γ Interval: 1.0DEG
 Test System:EVERFINE GO-SPEX500_V1 SYSTEM V2.00.460
 Humidity:65.0%
 Test Distance:3.080m [K=1.0000]
 Remarks:

LUMINANCE LIMITATION CURVES

Test:U:120.20V I:0.0981A P:11.611W PF:0.9844 Freq:59.98Hz UTHDi:0.00% ITHDi:0.00% KDisp:0 Lamp Flux:1074.73x1 lm		
NAME: LED-2-S11W-5CCT-WH-EY	TYPE:	WEIGHT:
SPEC.: 5000K 90	DIM.:	SERIAL No.:
MFR.: LTS	SUR.:	Shielding Angle:



LUMINANCE cd/(m2)		
G (DEG)	C0/180	C90/270
85	16	239
80	188	284
75	249	269
70	255	287
65	385	431
60	501	546
55	664	699
50	855	856
45	1310	1494

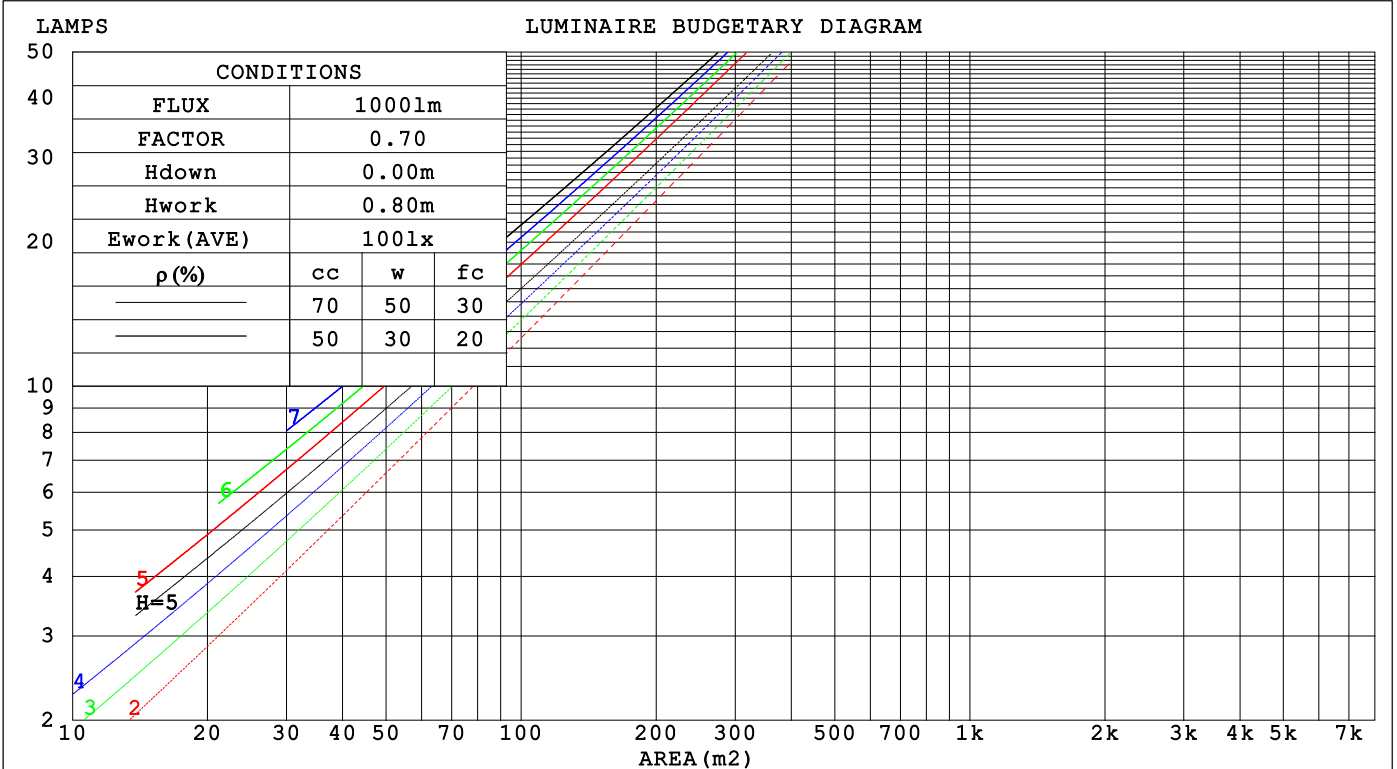
C Range: 0 - 360DEG
 C Interval: 22.5DEG
 Test Speed: HIGH
 Temperature: 24.3 °C
 Operators:
 Test Date: 2024-03-16

γ Range: 0 - 90DEG
 γ Interval: 1.0DEG
 Test System: EVERFINE GO-SPEX500_V1 SYSTEM V2.00.460
 Humidity: 65.0%
 Test Distance: 3.080m [K=1.0000]
 Remarks:

CU AND LUMINAIRE BUDGETARY ESTIMATE DIAGRAM

Test:U:120.20V I:0.0981A P:11.611W PF:0.9844 Freq:59.98Hz		
UTHDI:0.00% ITHDI:0.00% KDisp:0 Lamp Flux:1074.73x1 lm		
NAME: LED-2-S11W-5CCT-WH-EY	TYPE:	WEIGHT:
SPEC.: 5000K 90	DIM.:	SERIAL No.:
MFR.: LTS	SUR.:	Shielding Angle:

pcc	80%			70%			50%			30%			10%			0
pw	50%	30%	10%	50%	30%	10%	50%	30%	10%	50%	30%	10%	50%	30%	10%	0
pf _c	20%			20%			20%			20%			20%			0
RCR	RCR:Room Cavity Ratio Coefficients of Utilization(CU)															
0.0	1.19	1.19	1.19	1.16	1.16	1.16	1.11	1.11	1.11	1.06	1.06	1.06	1.02	1.02	1.02	1.00
1.0	1.10	1.08	1.06	1.08	1.06	1.04	1.04	1.02	1.01	1.01	.99	.98	.97	.96	.95	.93
2.0	1.03	.99	.95	1.01	.97	.94	.98	.95	.92	.95	.92	.90	.92	.90	.88	.86
3.0	.96	.91	.87	.94	.90	.86	.92	.88	.85	.89	.86	.83	.87	.84	.82	.80
4.0	.90	.84	.80	.88	.83	.79	.86	.82	.78	.84	.81	.77	.82	.79	.77	.75
5.0	.84	.78	.74	.83	.78	.74	.81	.77	.73	.80	.76	.72	.78	.75	.72	.70
6.0	.79	.73	.69	.79	.73	.69	.77	.72	.68	.76	.71	.68	.74	.71	.68	.66
7.0	.75	.69	.65	.74	.69	.65	.73	.68	.64	.72	.67	.64	.71	.67	.64	.62
8.0	.71	.65	.61	.71	.65	.61	.69	.64	.61	.68	.64	.61	.67	.63	.60	.59
9.0	.68	.62	.58	.67	.62	.58	.66	.61	.58	.65	.61	.58	.64	.60	.57	.56
10.0	.64	.59	.55	.64	.59	.55	.63	.58	.55	.62	.58	.55	.62	.58	.55	.53



C Range: 0 - 360DEG
 C Interval: 22.5DEG
 Test Speed: HIGH
 Temperature:24.3 °C
 Operators:
 Test Date:2024-03-16

γ Range: 0 - 90DEG
 γ Interval: 1.0DEG
 Test System:EVERFINE GO-SPEX500_V1 SYSTEM V2.00.460
 Humidity:65.0%
 Test Distance:3.080m [K=1.0000]
 Remarks:

WEC AND CCEC

Test:U:120.20V I:0.0981A P:11.611W PF:0.9844 Freq:59.98Hz		
UTHDi:0.00% ITHDi:0.00% KDisp:0 Lamp Flux:1074.73x1 lm		
NAME: LED-2-S11W-5CCT-WH-EY	TYPE:	WEIGHT:
SPEC.: 5000K 90	DIM.:	SERIAL No.:
MFR.: LTS	SUR.:	Shielding Angle:

ρ_{CC}	80%			70%			50%			30%			10%			0
ρ_w	50%	30%	10%	50%	30%	10%	50%	30%	10%	50%	30%	10%	50%	30%	10%	0
ρ_{fc}	20%			20%			20%			20%			20%			0
RCR	RCR:Room Cavity Ratio						Wall Exitance Coefficients(WEC)									
0.0																
1.0	.183	.104	.033	.176	.100	.032	.163	.094	.030	.152	.088	.028	.141	.082	.026	
2.0	.174	.096	.029	.169	.093	.029	.158	.088	.027	.148	.083	.026	.139	.079	.025	
3.0	.165	.088	.026	.160	.086	.026	.151	.082	.025	.143	.078	.024	.135	.075	.023	
4.0	.156	.081	.024	.152	.079	.023	.144	.076	.023	.137	.073	.022	.130	.071	.022	
5.0	.148	.075	.022	.144	.074	.022	.137	.071	.021	.131	.069	.021	.125	.067	.020	
6.0	.140	.070	.020	.137	.069	.020	.131	.067	.020	.125	.065	.019	.120	.063	.019	
7.0	.133	.066	.019	.130	.065	.018	.125	.063	.018	.120	.061	.018	.115	.060	.018	
8.0	.127	.062	.017	.124	.061	.017	.119	.060	.017	.115	.058	.017	.111	.057	.017	
9.0	.121	.058	.016	.118	.058	.016	.114	.056	.016	.110	.055	.016	.107	.054	.016	
10.0	.115	.055	.015	.113	.055	.015	.110	.054	.015	.106	.053	.015	.103	.052	.015	

ρ_{CC}	80%			70%			50%			30%			10%			0
ρ_w	50%	30%	10%	50%	30%	10%	50%	30%	10%	50%	30%	10%	50%	30%	10%	0
ρ_{fc}	20%			20%			20%			20%			20%			0
RCR	RCR:Room Cavity Ratio						Ceiling Cavity Exitance Coefficients(CCEC)									
0.0	.190	.190	.190	.163	.163	.163	.111	.111	.111	.064	.064	.064	.020	.020	.020	
1.0	.172	.157	.144	.147	.135	.124	.100	.093	.086	.058	.054	.050	.019	.017	.016	
2.0	.157	.132	.112	.134	.114	.097	.092	.079	.068	.053	.046	.040	.017	.015	.013	
3.0	.144	.114	.089	.124	.098	.077	.085	.068	.054	.049	.040	.032	.016	.013	.010	
4.0	.134	.099	.072	.115	.085	.063	.079	.060	.044	.046	.035	.026	.015	.011	.009	
5.0	.125	.087	.059	.107	.076	.052	.074	.053	.037	.043	.031	.022	.014	.010	.007	
6.0	.117	.078	.050	.101	.068	.043	.070	.047	.031	.040	.028	.018	.013	.009	.006	
7.0	.111	.070	.042	.095	.061	.037	.066	.043	.026	.038	.025	.016	.012	.008	.005	
8.0	.105	.064	.036	.090	.056	.032	.062	.039	.022	.036	.023	.013	.012	.008	.004	
9.0	.099	.059	.031	.085	.051	.027	.059	.036	.020	.035	.021	.012	.011	.007	.004	
10.0	.094	.054	.028	.081	.047	.024	.056	.033	.017	.033	.020	.010	.011	.006	.003	

C Range: 0 - 360DEG
 C Interval: 22.5DEG
 Test Speed: HIGH
 Temperature:24.3°C
 Operators:
 Test Date:2024-03-16

γ Range: 0 - 90DEG
 γ Interval: 1.0DEG
 Test System:EVERFINE GO-SPEX500_V1 SYSTEM V2.00.460
 Humidity:65.0%
 Test Distance:3.080m [K=1.0000]
 Remarks:

UGR(Unified Glare Rating) Table

Test:U:120.20V I:0.0981A P:11.611W PF:0.9844 Freq:59.98Hz UTHDi:0.00% ITHDi:0.00% KDisp:0 Lamp Flux:1074.73x1 lm		
NAME: LED-2-S11W-5CCT-WH-EY	TYPE:	WEIGHT:
SPEC.: 5000K 90	DIM.:	SERIAL No.:
MFR.: LTS	SUR.:	Shielding Angle:

ceiling/cavity	0.7	0.7	0.5	0.5	0.3	0.7	0.7	0.5	0.5	0.3
walls	0.5	0.3	0.5	0.3	0.3	0.5	0.3	0.5	0.3	0.3
working plane	0.2	0.2	0.2	0.2	0.2	0.2	0.2	0.2	0.2	0.2

Room dimensions	Viewed crosswise					Viewed endwise				
x = 2H y = 2H	8.1	9.0	8.3	9.2	9.3	8.4	9.3	8.6	9.5	9.7
3H	8.2	9.1	8.4	9.3	9.5	8.5	9.4	8.8	9.6	9.8
4H	8.2	9.1	8.5	9.3	9.5	8.6	9.4	8.9	9.6	9.9
6H	8.2	9.0	8.5	9.3	9.5	8.6	9.4	8.9	9.7	9.9
8H	8.2	9.0	8.5	9.2	9.5	8.7	9.4	9.0	9.7	9.9
12H	8.2	8.9	8.5	9.2	9.4	8.7	9.4	9.0	9.7	9.9
4H 2H	8.1	8.9	8.4	9.1	9.4	8.4	9.2	8.7	9.4	9.7
3H	8.3	9.0	8.6	9.3	9.6	8.6	9.3	8.9	9.6	9.9
4H	8.4	9.0	8.7	9.3	9.7	8.7	9.4	9.1	9.7	10.0
6H	8.5	9.0	8.8	9.4	9.7	8.9	9.4	9.2	9.8	10.1
8H	8.4	9.0	8.8	9.3	9.7	8.9	9.5	9.3	9.8	10.2
12H	8.4	8.9	8.8	9.3	9.6	8.9	9.4	9.4	9.8	10.2
8H 4H	8.4	8.9	8.8	9.3	9.6	8.7	9.2	9.1	9.6	9.9
6H	8.5	8.9	8.9	9.3	9.7	8.9	9.3	9.3	9.7	10.1
8H	8.5	8.9	8.9	9.3	9.7	9.0	9.4	9.4	9.8	10.2
12H	8.4	8.7	8.9	9.2	9.7	9.0	9.4	9.5	9.8	10.3
12H 4H	8.3	8.8	8.7	9.2	9.6	8.7	9.1	9.1	9.5	9.9
6H	8.5	8.8	8.9	9.3	9.7	8.9	9.3	9.3	9.7	10.1
8H	8.4	8.8	8.9	9.2	9.7	9.0	9.3	9.4	9.7	10.2

Variations with the observer position at spacings(CIE Pub.117):		
S = 1.0H	+ 1.3 / - 2.1	+ 1.2 / - 1.9
1.5H	+ 1.8 / - 1.4	+ 2.0 / - 1.5
2.0H	+ 2.7 / - 1.7	+ 3.0 / - 1.5

CIE Pub.117, 1075 lm Total Lamp Luminous Flux Correct (8log(F/F0) = 0.3)
 Area: 0.111111 m2

C Range: 0 - 360DEG
 C Interval: 22.5DEG
 Test Speed: HIGH
 Temperature:24.3°C
 Operators:
 Test Date:2024-03-16

γ Range: 0 - 90DEG
 γ Interval: 1.0DEG
 Test System:EVERFINE GO-SPEX500_V1 SYSTEM V2.00.460
 Humidity:65.0%
 Test Distance:3.080m [K=1.0000]
 Remarks:

UTILIZATION FACTORS TABLE

Test:U:120.20V I:0.0981A P:11.611W PF:0.9844 Freq:59.98Hz UTHDi:0.00% ITHDi:0.00% KDisp:0 Lamp Flux:1074.73x1 lm		
NAME: LED-2-S11W-5CCT-WH-EY	TYPE:	WEIGHT:
SPEC.: 5000K 90	DIM.:	SERIAL No.:
MFR.: LTS	SUR.:	Shielding Angle:

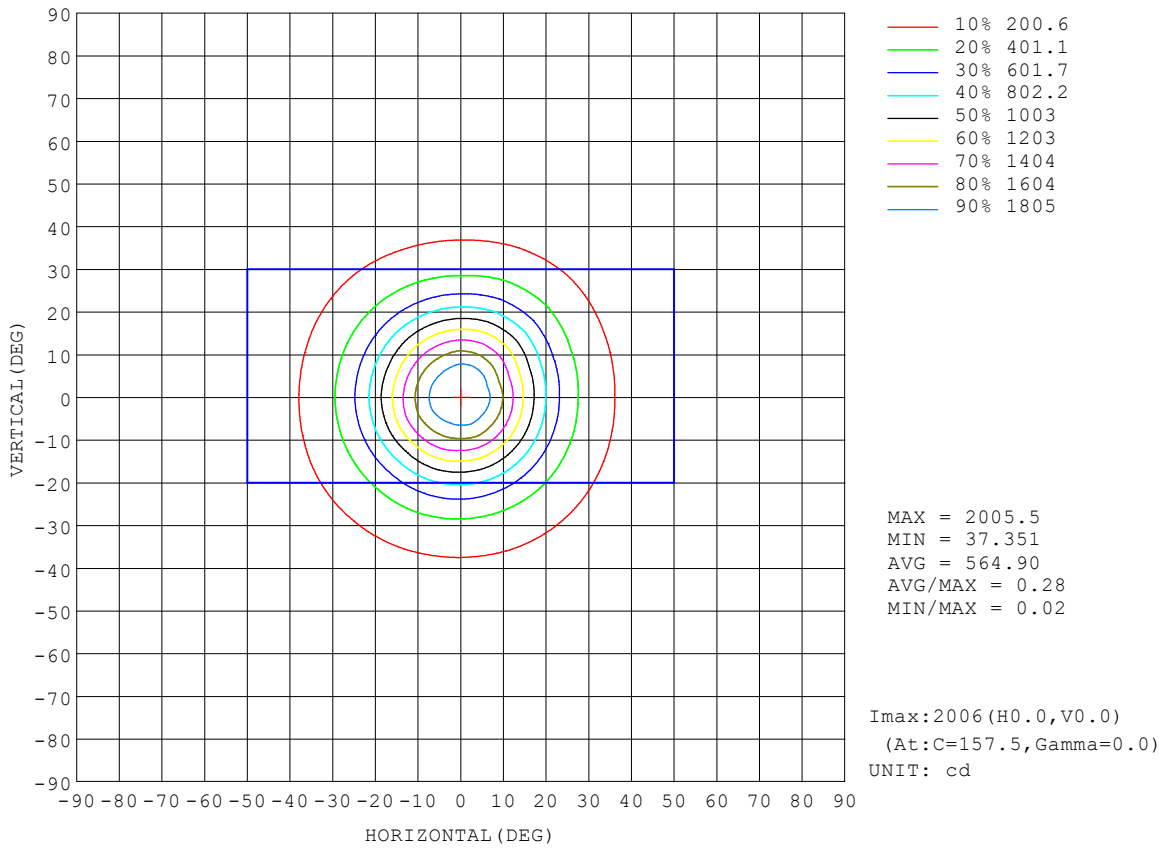
REFLECTANCE										
Ceiling	0.8	0.8	0.8	0.7	0.7	0.7	0.5	0.5	0.5	0
Walls	0.7	0.5	0.3	0.7	0.5	0.3	0.7	0.5	0.3	0
Working plane	0.2	0.2	0.2	0.2	0.2	0.2	0.2	0.2	0.2	0
ROOM INDEX	UTILIZATION FACTORS (PERCENT) $k(RI) \times RCR = 5$									
$k = 0.60$	82	75	71	82	75	71	81	75	71	67
0.80	91	84	79	90	83	79	89	83	79	75
1.00	96	89	85	95	89	85	93	89	84	80
1.25	100	94	90	99	94	90	97	93	89	85
1.50	103	98	94	102	97	94	100	96	93	88
2.00	107	102	98	105	101	98	103	99	96	91
2.50	109	104	101	107	103	100	104	101	98	92
3.00	111	107	104	109	105	103	105	103	100	94
4.00	113	110	107	111	108	106	107	105	103	96
5.00	114	112	109	112	110	108	108	106	105	97
ROOM INDEX	UF(total)									Direct
According to DIN EN 13032-2 2004			Suspended				SHRNOM = 1.25			

C Range: 0 - 360DEG
 C Interval: 22.5DEG
 Test Speed: HIGH
 Temperature: 24.3°C
 Operators:
 Test Date: 2024-03-16

γ Range: 0 - 90DEG
 γ Interval: 1.0DEG
 Test System: EVERFINE GO-SPEX500_V1 SYSTEM V2.00.460
 Humidity: 65.0%
 Test Distance: 3.080m [K=1.0000]
 Remarks:

ISOCANDELA DIAGRAM

Test:U:120.20V I:0.0981A P:11.611W PF:0.9844 Freq:59.98Hz UTHDi:0.00% ITHDi:0.00% KDisp:0 Lamp Flux:1074.73x1 lm		
NAME: LED-2-S11W-5CCT-WH-EY	TYPE:	WEIGHT:
SPEC.: 5000K 90	DIM.:	SERIAL No.:
MFR.: LTS	SUR.:	Shielding Angle:

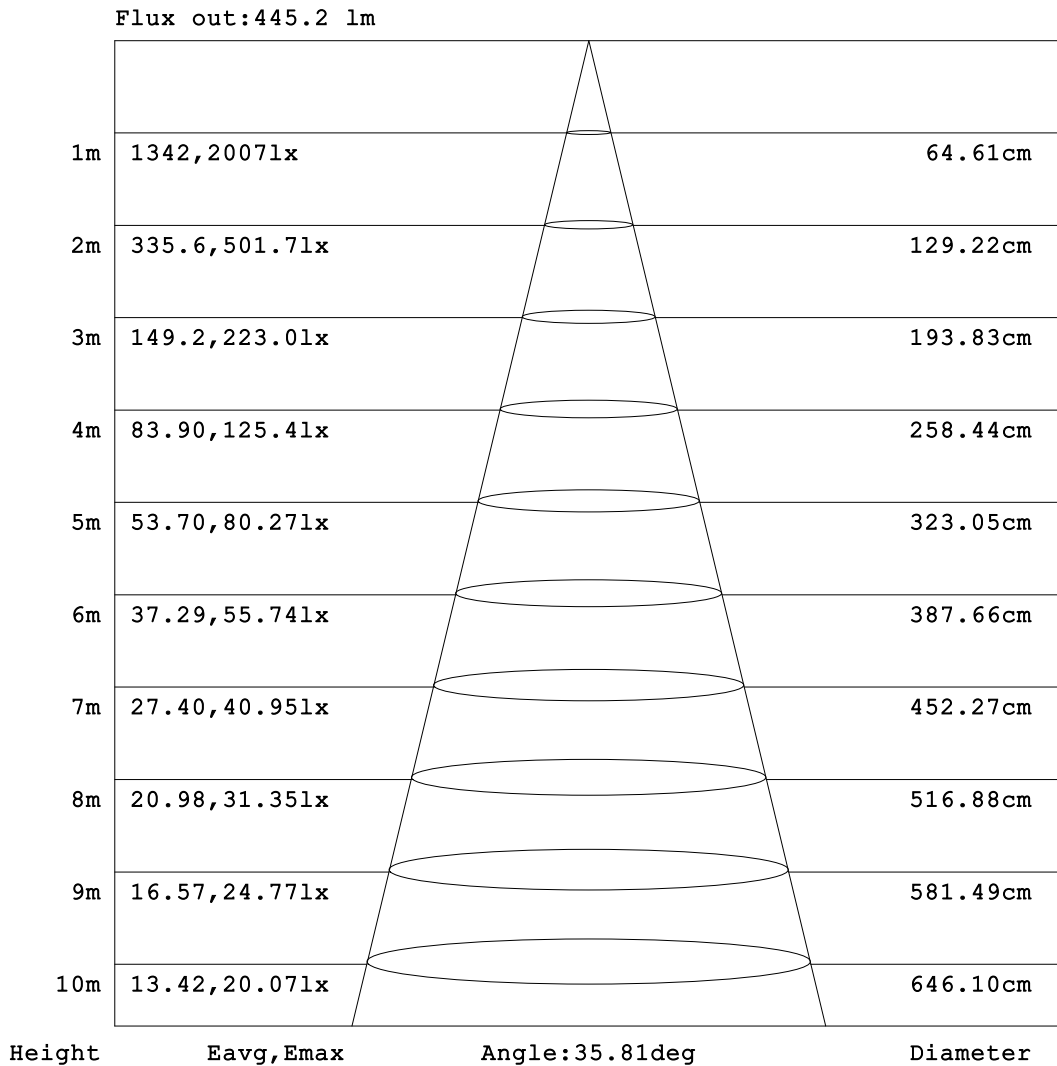


C Range: 0 - 360DEG
 C Interval: 22.5DEG
 Test Speed: HIGH
 Temperature:24.3°C
 Operators:
 Test Date:2024-03-16

γ Range: 0 - 90DEG
 γ Interval: 1.0DEG
 Test System:EVERFINE GO-SPEX500_V1 SYSTEM V2.00.460
 Humidity:65.0%
 Test Distance:3.080m [K=1.0000]
 Remarks:

AAI Figure

Test:U:120.20V I:0.0981A P:11.611W PF:0.9844 Freq:59.98Hz UTHDi:0.00% ITHDi:0.00% KDisp:0 Lamp Flux:1074.73x1 lm		
NAME: LED-2-S11W-5CCT-WH-EY	TYPE:	WEIGHT:
SPEC.: 5000K 90	DIM.:	SERIAL No.:
MFR.: LTS	SUR.:	Shielding Angle:



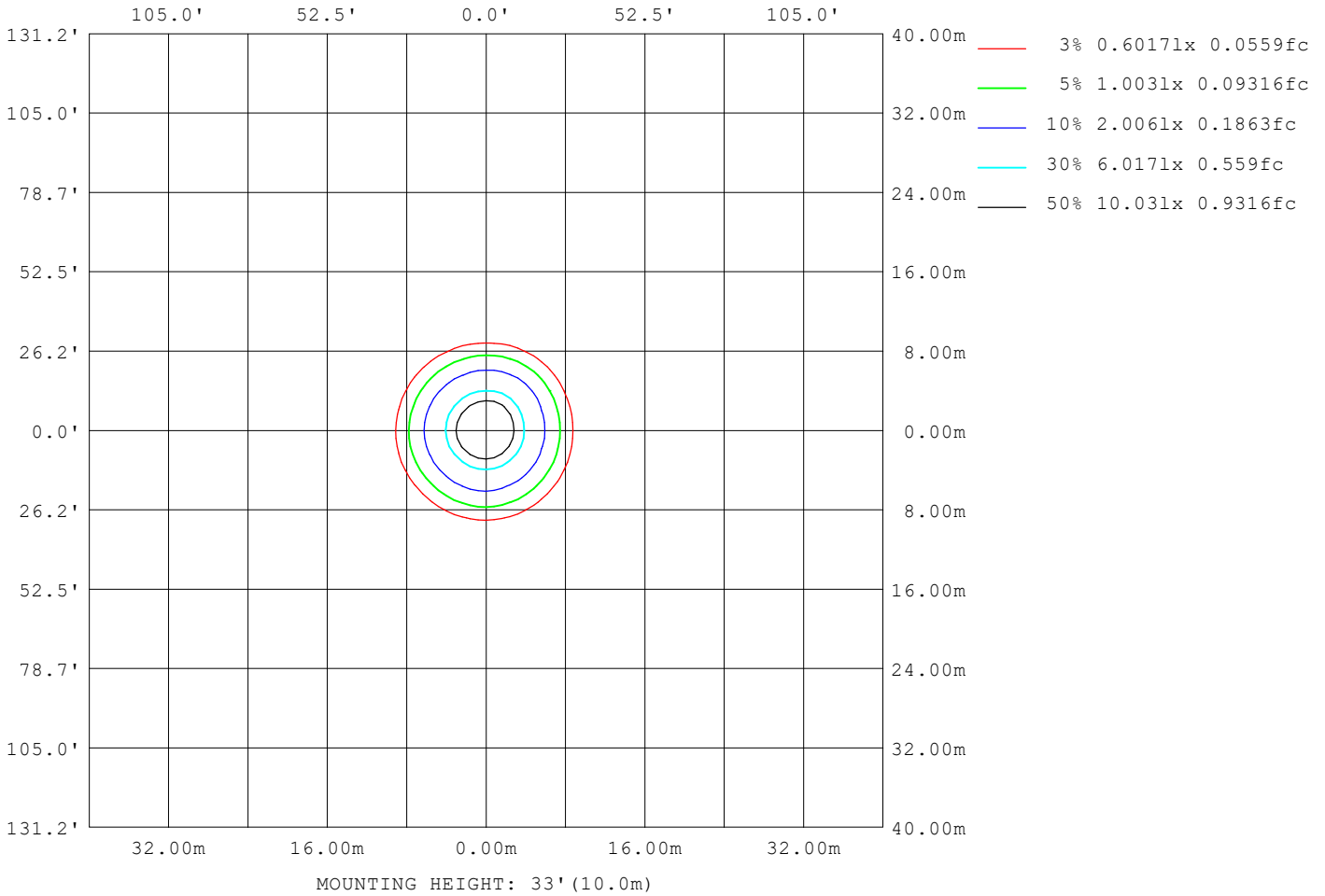
Note: The Curves indicate the illuminated area and the average illumination when the luminaire is at different distance.

C Range: 0 - 360DEG
 C Interval: 22.5DEG
 Test Speed: HIGH
 Temperature: 24.3 °C
 Operators:
 Test Date: 2024-03-16

γ Range: 0 - 90DEG
 γ Interval: 1.0DEG
 Test System: EVERFINE GO-SPEX500_V1 SYSTEM V2.00.460
 Humidity: 65.0%
 Test Distance: 3.080m [K=1.0000]
 Remarks:

ISOLUX DIAGRAM

Test:U:120.20V I:0.0981A P:11.611W PF:0.9844 Freq:59.98Hz UTHDi:0.00% ITHDi:0.00% KDisp:0 Lamp Flux:1074.73x1 lm		
NAME: LED-2-S11W-5CCT-WH-EY	TYPE:	WEIGHT:
SPEC.: 5000K 90	DIM.:	SERIAL No.:
MFR.: LTS	SUR.:	Shielding Angle:



C Range: 0 - 360DEG
 C Interval: 22.5DEG
 Test Speed: HIGH
 Temperature: 24.3°C
 Operators:
 Test Date: 2024-03-16

γ Range: 0 - 90DEG
 γ Interval: 1.0DEG
 Test System: EVERFINE GO-SPEX500_V1 SYSTEM V2.00.460
 Humidity: 65.0%
 Test Distance: 3.080m [K=1.0000]
 Remarks:

LED Avg.L Report

Test:U:120.20V I:0.0981A P:11.611W PF:0.9844 Freq:59.98Hz UTHDi:0.00% ITHDi:0.00% KDisp:0 Lamp Flux:1074.73x1 lm		
NAME: LED-2-S11W-5CCT-WH-EY	TYPE:	WEIGHT:
SPEC.: 5000K 90	DIM.:	SERIAL No.:
MFR.: LTS	SUR.:	Shielding Angle:

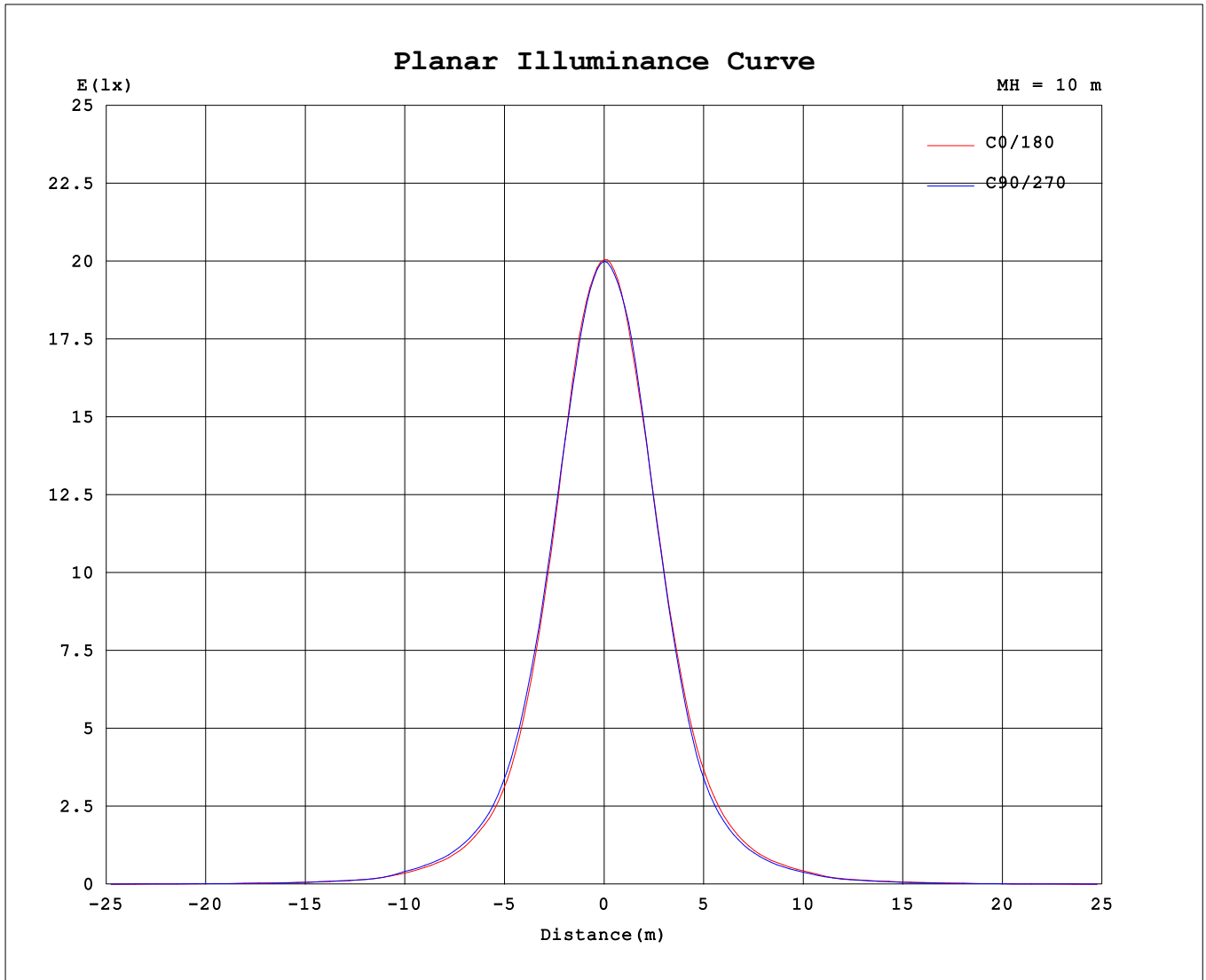
AvgL	cd/m2
L_0~180 (65) av	395
L_0~180 (75) av	249
L_0~180 (85) av	29
L_90~270 (65) av	423
L_90~270 (75) av	274
L_90~270 (85) av	228
L_45 (65) av	418
L_45 (75) av	262
L_45 (85) av	66

Standard: GB/T 29293-2012

C Range: 0 - 360DEG
 C Interval: 22.5DEG
 Test Speed: HIGH
 Temperature:24.3℃
 Operators:
 Test Date:2024-03-16

γ Range: 0 - 90DEG
 γ Interval: 1.0DEG
 Test System:EVERFINE GO-SPEX500_V1 SYSTEM V2.00.460
 Humidity:65.0%
 Test Distance:3.080m [K=1.0000]
 Remarks:

Planar Illuminance Curve



C Range: 0 - 360DEG
 C Interval: 22.5DEG
 Test Speed: HIGH
 Temperature: 24.3 °C
 Operators:
 Test Date: 2024-03-16

γ Range: 0 - 90DEG
 γ Interval: 1.0DEG
 Test System: EVERFINE GO-SPEX500_V1 SYSTEM V2.00.460
 Humidity: 65.0%
 Test Distance: 3.080m [K=1.0000]
 Remarks:

LUMINOUS DISTRIBUTION INTENSITY DATA

Test:U:120.20V I:0.0981A P:11.611W PF:0.9844 Freq:59.98Hz UTHDi:0.00% ITHDi:0.00% KDisp:0 Lamp Flux:1074.73x1 lm		
NAME: LED-2-S11W-5CCT-WH-EY	TYPE:	WEIGHT:
SPEC.: 5000K 90	DIM.:	SERIAL No.:
MFR.: LTS	SUR.:	Shielding Angle:

Table--1

UNIT: cd

C (DEG) \ γ (DEG)	0	22.5	45	67.5	90	112.5	135	157.5	180	202.5	225	247.5	270	292.5	315	337.5			
0	2001	2001	2001	2001	2001	2001	2001	2001	2001	2001	2001	2001	2001	2001	2001	2001			
5	1890	1884	1879	1888	1883	1884	1895	1919	1916	1902	1899	1898	1916	1923	1912	1889			
10	1591	1585	1583	1593	1582	1598	1620	1650	1644	1638	1639	1644	1669	1663	1639	1585			
15	1171	1173	1183	1193	1201	1226	1243	1287	1283	1260	1266	1263	1276	1293	1278	1195			
20	795	798	810	826	833	849	855	889	903	889	888	878	884	906	898	825			
25	503	503	517	531	545	550	552	576	589	581	570	559	555	581	579	527			
30	325	327	335	341	353	361	361	374	381	374	364	354	350	371	371	340			
35	220	222	228	237	244	246	246	254	252	247	241	232	231	241	242	225			
40	152	154	159	166	169	169	168	173	172	169	165	158	157	162	162	155			
45	103	106	110	115	117	119	119	122	121	118	115	111	110	112	112	104			
50	60.9	60.7	60.9	61.1	61.2	62.0	63.3	67.3	69.3	69.1	68.3	65.6	65.1	66.8	66.7	62.7			
55	42.2	43.1	43.7	44.5	44.5	45.2	45.8	47.6	48.6	48.3	47.0	44.8	44.8	44.4	43.6	41.8			
60	27.8	28.5	29.2	30.1	30.4	31.1	31.4	30.9	30.7	31.1	30.3	28.9	28.9	28.3	27.7	27.1			
65	18.1	18.4	19.0	19.8	20.2	20.9	20.9	19.2	19.1	20.7	20.4	19.5	19.5	19.0	18.3	17.7			
70	9.66	9.39	10.3	10.7	10.9	11.1	11.0	9.52	9.48	10.6	11.2	10.9	10.7	10.5	10.2	9.81			
75	7.15	7.20	7.37	7.73	7.74	7.57	7.29	7.30	7.14	7.21	7.59	7.92	8.02	7.96	7.85	7.43			
80	3.62	3.79	4.28	5.13	5.48	4.96	4.36	4.09	3.84	3.96	4.51	5.12	5.55	5.34	4.78	3.99			
85	0.15	0.15	0.53	1.71	2.31	1.64	0.84	0.57	0.40	0.42	0.69	1.42	2.09	1.44	0.51	0.14			
90	0.08	0.08	0.08	0.09	0.09	0.09	0.08	0.09	0.07	0.06	0.06	0.07	0.07	0.07	0.06	0.06			

C Range: 0 - 360DEG
 C Interval: 22.5DEG
 Test Speed: HIGH
 Temperature:24.3°C
 Operators:
 Test Date:2024-03-16

γ Range: 0 - 90DEG
 γ Interval: 1.0DEG
 Test System:EVERFINE GO-SPEX500_V1 SYSTEM V2.00.460
 Humidity:65.0%
 Test Distance:3.080m [K=1.0000]
 Remarks: